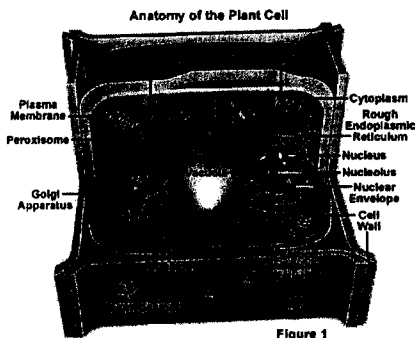


# "Cell-a-bration Day" : Cell Model Project



Cell-a-bration Day is a project day. It's a day to show off your creativity, while proving you understand that the cell is three-dimensional and an important part of all organisms. You must meet the criteria and deadline your teacher sets by completing one of the projects listed below.



## Project Guidelines:

**Cell models** should be created so that the cell parts can be seen and labeled. You will need to include a key for your model. The key must include the name and function of the cell organelles. The cell must be large enough, so everyone can see and distinguish each of the organelles. The model must be built or constructed by you in some way. Use any of the suggested materials discussed in class (styrofoam™, modeling clay, salt-dough, wood, shoeboxes, and jars) are all good materials to work with. Be creative and choose good representations for your cell organelles.

**Edible cells** should be made from something that is edible. This will be a food day, so plan to make enough to share with the class. All other rules apply. It must be three-dimensional with realistic representations of each of the organelles. (Candies or frosting make good choice to use for the organelles. Good bases for the cytoplasm may be cookie dough, cake batter, bread or pizza dough, gelatin, or anything else that appeals to you.)

**Also, make sure you plan on how to get it to school the day it is due.**

My Cell-a-bration Day is on Friday, Sept. 19. (date due)  
 (Any project turned in late will be reduced one letter grade.)

My Cell-a-bration Day Project will be a typical (check one):

- A. Plant Cell  
 B. Animal Cell

My project will be (check one):

- A. A three-dimensional model  
 B. An edible cell

I understand that my child, \_\_\_\_\_, has a project due on \_\_\_\_\_.

Parent Signature: \_\_\_\_\_ Today's Date: \_\_\_\_\_

Student Signature: \_\_\_\_\_ Today's Date: \_\_\_\_\_